

EQ and IQ

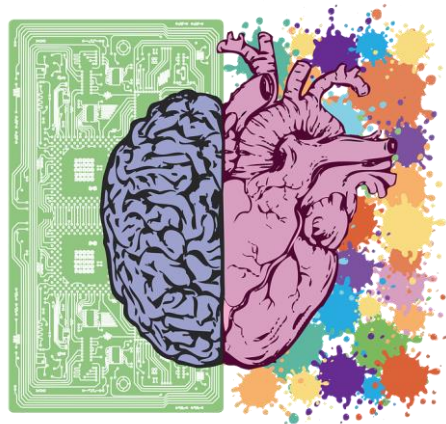
Before your class ...

In your phone class, you'll look at some new vocabulary and then put it into practice. To give you a head start, take a look at the key vocabulary on the other side of the sheet and then do the exercises below. If you need help with the meaning, you can consult a dictionary. You will go through the answers with your teacher during the class.

1. Match the words to the definitions.

- a. emotional intelligence
- b. intelligence quotient
- c. awareness
- d. impulse
- e. to regulate
- f. integrity
- g. intuition
- h. ability
- i. intellectual

- 1. to make something is more normal or regular
- 2. the ability to identify, assess, and control the emotions of oneself
- 3. how well you manage your intelligence
- 4. sudden urge to do something without thinking
- 5. the ability to know what's happening around you
- 6. your own personal sense of what is good and safe
- 7. having a skill or being able to do something
- 8. a personal value of knowing what is good and right
- 9. a person possessing a highly developed intellect



2. Complete the sentences below with the key vocabulary on the other side of the sheet.

- a) John's father is extremely _____ - he is knowledgeable on most topics.
- b) She's very astute - she has the _____ to construct a good argument.
- c) Alan often buys things without thinking, he is very _____
- d) It is important to display _____ when dealing with sensitive subjects.
- e) Mary has very good _____. She always makes the right decision.
- f) Steven's loyalty and inclusivity are examples of his _____.
- g) She loves being outdoors, she believes she has a _____ connection with nature
- h) It is important to look after your _____ in order to live a healthy life.

EQ and IQ

Starting point

1. Have you ever done an IQ test?
2. What qualities/abilities are required for your job?

Key vocabulary



Key phrases

Let's look at some key phrases which will help you express yourself in the role play.

I trust my gut instinct.

Being socially unaware can cause you to...

If you are emotionally inept, it might lead to...

I prefer not to hold a grudge.

Emotional quotient should be taken into account for jobs like...

Impulse purchases can drain your bank account fast.

She has an above average/a high IQ.

Making astute decisions is especially important when...

You can become a pillar of society by...

I tend to be reserved/shy when meeting new people.

Speaking

Your teacher will ask you a series of questions related to the class topic. Include the key vocabulary and phrases in your

Role play

1. Your friend (your teacher) comes to you with a personal problem. Try to display some empathy and offer advice.
2. You are being interviewed for a new job; tell the interviewer (your teacher) about personality traits of yours related to EQ.