

An Ardor Learning Group Class

The world of work



In this class you'll:

- Learn about different jobs and workplaces
- Learn key expressions related to the topic
- Practice the indefinite articles (a/an) and some prepositions
- Talk about your work and responsibilities

Ice-breaker

What do you do?





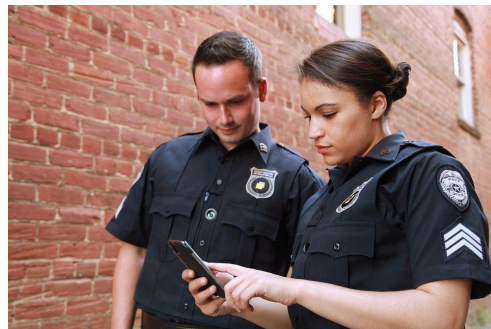
teacher



waiter/waitress



baker



**policeman/
policewoman**

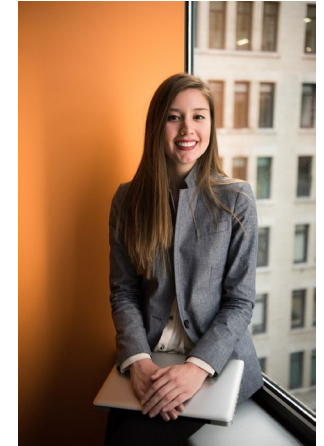


engineer



doctor

What other professions do you know?



What about you?



What did you want to be
as a child?

Workplaces



hospital



office



outdoors



school



restaurant





home

Have a look at the descriptions.
What jobs can they refer to?

- This person works at a school.
- This person works in an office.
- This person works at a hospital.
- This person works at a restaurant.
- This person works outdoors.



Match the questions and their answers.

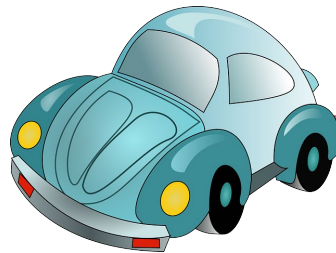
- What do you do?
 - How do you get to work?
 - What are your working hours?
 - What do you do at your work?
- I go to work by bus. 
 - I bake bread and other pastries.
 - I am a baker. 
 - I start at 5 am and finish at 1 pm.



Means of transportation



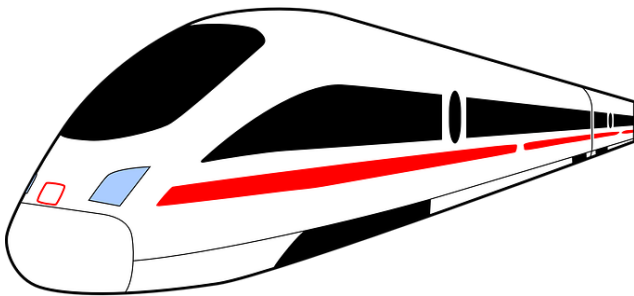
by bus



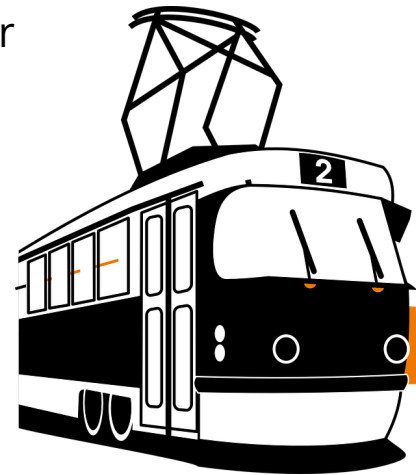
by car



by bike



by train



tram



by walk

The indefinite article (a/an)

- We use the indefinite article with singular nouns when we talk about something in general.
- **"A"** is followed by a noun that begins with a consonant.
E.g.: a baker
- **"An"** is followed by a noun that begins with a vowel (sound).
E.g.: an author
- Exceptions: a euro, a university

Prepositions

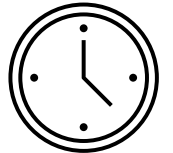
- **as** - *to talk about your job title/type of job*
I work **as** a firefighter.



- **for** - *to talk about your employer*
I work **for** a multinational company.



- **from** - *the time you start work*
- **to** - *the time you finish work*
I work **from** 8 am **to** 5 pm.



- **with** - *to talk about your colleagues*
I work **with** people from all over the world.



Complete the text with the correct indefinite article (*a/an*) or preposition (*as, for, from, to, with*)

My aunt works ___ ___ engineer. She works ___ ___ company that makes cars. She works ___ other engineers ___ all over the world. She has flexible working hours, but she usually works ___ 9 am ___ 6 pm. My uncle's working hours are different. He works ___ 8 am ___ 4 pm. He works ___ ___ teacher. He works ___ ___ high school in my hometown. He teaches Literature and he works ___ other teachers and a lot of students. They both love their jobs.



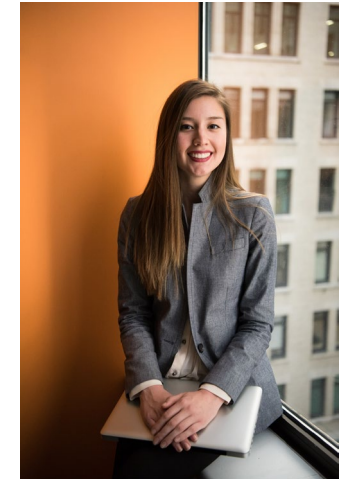
Have a look at the pictures and answer these four questions:

What does he/she work as?

Where does he/she work?

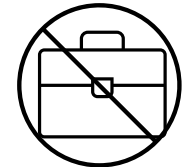
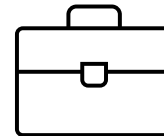
What are his/her working hours?

Who does he/she work with?



Events in your career history

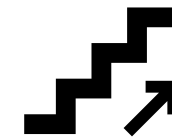
Have a look at the expressions and discuss their meanings.



send your CV

get the job

leave the job/retire



see the job advertisement

go for the interview

get promoted

Can you tell us about your career history?

Use the expressions
on the previous
slide.



What is a good...



teacher

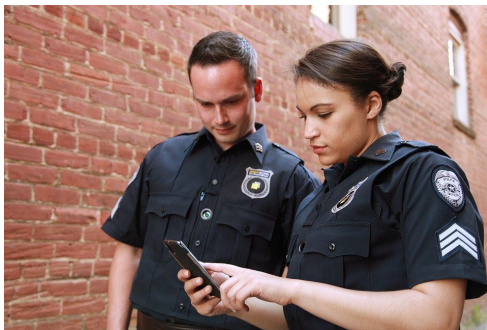


baker



doctor

...like?



policeman/policewoman



firefighter



photographer

What is the job of the man in the middle?

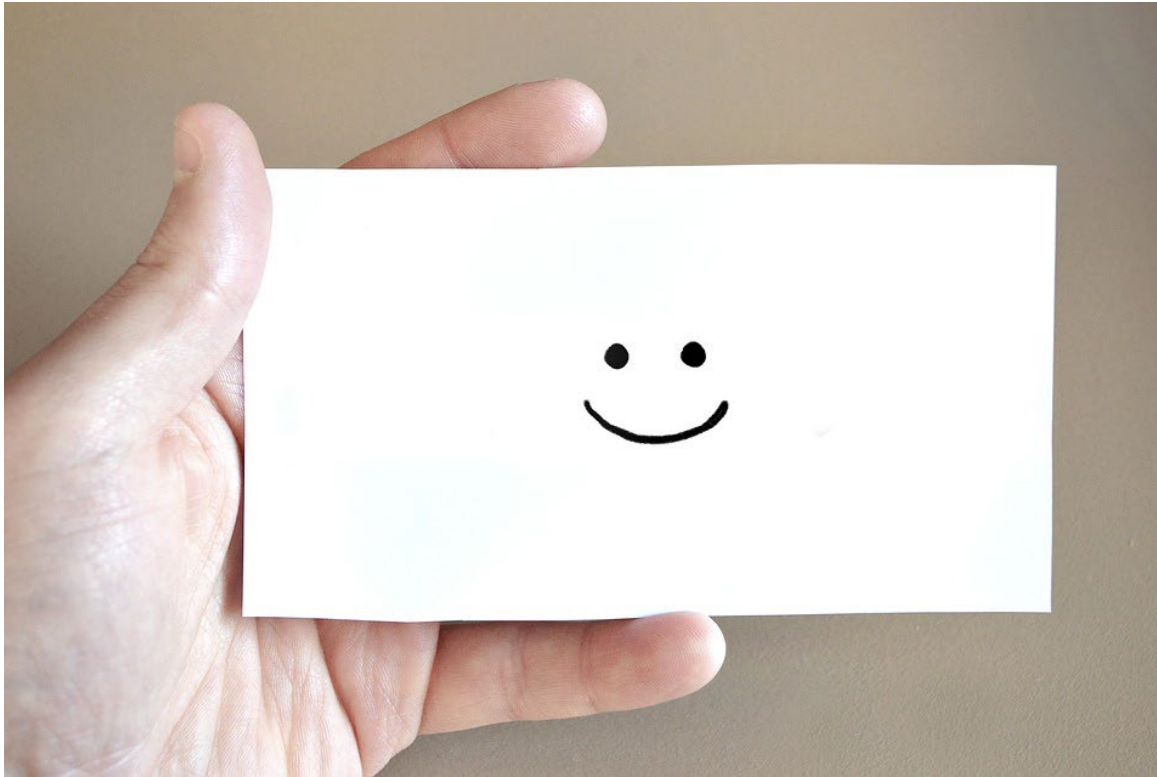
Do you think he uses English at work?



Can you think of other jobs where English is needed?

Do you need English for your job?





Great job!

The end